

PROFITABLE ROOFING & WATERPROOFING

WetSuit® Cold Fluid, Spray-Applied Seamless Membrane System



PROFITABLE ROOFING & WATERPROOFING:

WetSuit® Cold Fluid, Spray-Applied Seamless Membrane System

Brought to you by:
Poseidon Sales, LLC



Published By:

Poseidon Sales, LLC
3471 High Ridge Rd
Boynton Beach, FL 33426

© Copyright Poseidon Sales, LLC
All rights reserved. May be shared un-edited with
copyright and credit intact.

PoseidonCoatings.com

Stop Losing Money On Your Current Waterproofing Solution

If you're tired of dealing with labor-intensive waterproofing, warranty costs and call backs on work, and would just like an easy way to increase your bottom line and take on more projects in half the time, then you should learn more about WetSuit® Fluid Applied Membrane System now by picking up the phone and calling the number below...

(Toll Free) **1-888-530-8320**



ABOUT POSEIDON

Poseidon Sales is the exclusive distributor and representative for Neptune Coatings Corporation. Neptune Coatings Corporation manufactures roofing, waterproofing, containment barrier, protective coating products, and installation equipment. Poseidon Sales Markets and distributes exclusively in 26 states east of the Mississippi River, the Caribbean Islands and Bermuda.

Poseidon Sales management team consists of professionals, each with over 35 years' experience, in both the Construction & Development arena as well as the Roofing & Waterproofing industry. The team has delivered billions of dollars in project value throughout the world.



Fluid Applied Membrane System



seamless possibilities



Neptune Coatings Corporation (NCC) manufactures the WetSuit® System for roofing, waterproofing and air/vapor barrier applications. In contrast to other coating manufacturers, NCC has the unique background in the design and manufacturing of coating spray application systems and manufactures and services all of their proprietary WetSuit® application systems.

The WetSuit® System consists of a range of environmentally friendly solutions used throughout the building envelope that meet specific roofing, waterproofing and air/vapor barrier requirements. All of our fluid applied, seamless membranes are water based, cold applied, have no VOC's and are Class A self-extinguishing fire rated.



The WetSuit® System



WetSuit® 2-Part is a cold spray applied instant set membrane which is catalyzed to form a seamless, waterproofing membrane.



WetSuit® 1-Part is similar to WetSuit® 2-Part but is not catalyzed and has a slower cure time. It can be sprayed, brush or roll applied.



UnderCover is a single component, medium viscosity, material used exclusively underneath the WetSuit® System to pre-strip joints, penetrations, or detail transitions.



WetSuit® Trowel has the waterproofing characteristics of the 1 and 2-Part products, but is thicker. Ideal for patching cracks, voids and penetrations.



WetSuit® Fiber Trowel has strands of chopped fiberglass premixed into the material. Trowel with fiber cures into a strong, reinforced patch to be used in detail areas or cracks where a lot of movement is anticipated.



Invisilink® is a lightweight yet super durable contouring seam fabric used with WetSuit® 1-Part, Trowel or Undercover to reinforce joints, cracks or seams.





CLASS A SELF-EXTINGUISHING
FIRE RATING

SUPERIOR WIND UPLIFT

SEVERE HAIL RESISTANCE

WATER-BASED

NO VOC'S

LOW ODOR

EXCELLENT ADHESION

1600% ELONGATION

UV STABLE

SELF FLASHING

INSTANT AND ADJUSTABLE CURE

ANY MIL THICKNESS IN A
SINGLE COAT

TAKES PONDING WATER
INDEFINITELY

WetSuit® 2-Part Fluid Applied Membrane

The WetSuit® liquid membrane is a fully self-adhered, cold spray applied, self-flashing membrane with a wide variety of uses for virtually all above and below grade applications. It can be sprayed to any mil thickness in a single pass thus creating a truly custom and precise membrane allowing unparalleled architectural freedom and ease of application.

The Healthier and Safer Coating Alternative

The water-based, no VOC, low pressure, cold spray applied, non-flammable features of WetSuit® eliminate job hazards such as torches, solvents, and heavy equipment.

Unrivalled Quality & Versatility

FM testing proved to put WetSuit® in a class of its own. It is one of a select few materials on the market with a Class A fire rating, severe hail resistance, 1600% elongation and a wind uplift of Class 1-990! In addition, WetSuit® is proven as a viable air and vapor barrier. With very low perms, WetSuit® can be employed not only in below grade applications and roofing, but in between as a seamless, fluid applied vapor barrier as well.

Time and Money Saving

Because WetSuit® is so lightweight and with excellent adhesion to most roof surfaces, the need to tear off existing roofs is most often eliminated, greatly reducing installation costs and environmental impact. Surface preparation is generally limited to pressure washing the old roof to provide a clean surface for WetSuit® to adhere to. Utilizing only one applicator, WetSuit® can be installed at a fast and efficient rate of 1500 sq ft per hour, reducing crew size and job time.

Energy Star® Cool Roofs

The WetSuit® System can be top coated with a range of reflective coatings to meet Energy Star® and CRRC standards for "cool roof" reflectivity. For a list of approved topcoat manufacturers contact Neptune Coatings.



Intertek



Physical Properties	FM & ASTM Test	Result
COLOR		BROWN TO BLACK
NONTOXIC		NO SOLVENTS
SHELF LIFE		1 YEAR
MINIMUM CURED FILM THICKNESS		60 MILS
FIRE	ASTM E108	CLASS A ON 4" SLOPE
HAIL RESISTANCE	FM 4470	SEVERE HAIL PASS
UV EXPOSURE	FM 4470	PASS
FIRE	FM 4470	PASS
WIND	FM 4470	CLASS 1-990 OVER STRUCTURAL CONCRETE CLASS 1-420 OVER HOT MOPPED CAP SHEET
WATER LEAKAGE	FM 4470	PASS
FOOT TRAFFIC	FM 4470	PASS
PONDING		NO EFFECTS AFTER 6 MONTHS
ACCELERATED WEATHERING (1000 HOURS, 7 YEARS)	ASTM G26	NO ADVERSE EFFECTS
IMPACT RESISTANCE	ASTM D3746	NO EFFECT
XENON EXPOSURE 1000 HOURS (UV)	ASTM G155	PASS
PEEL ADHESION TO CONCRETE	ASTM D903	32.5 LBS.
*PEEL ADHESION TO PRIMED CONCRETE	ASTM D903	20.83 LBS.
PEEL ADHESION TO EPDM	ASTM D903	20.24 LBS.
*PEEL ADHESION TO PRIMED EPDM	ASTM D903	22 LBS.
LOW TEMPERATURE BEND	ASTM D2136	PASS AT -30 DEGREES F
WATER VAPOR TRANSMISSION @ 35 MILS	ASTM E96	.0382 WVT / .0554 PERMS
AIR LEAKAGE @ 35 MILS	ASTM E283	0.001 (BELOW DETECTABLE LIMITS OF TEST EQUIPMENT USED)
AIR PERMEANCE OF BUILDING MATERIALS	ASTM 2178	1.57 LBS. /FT2 or .0018 CFM/FT2
SURFACE BURNING CHARACTERISTICS	ASTM E84	CLASS A: SMOKE INDEX 200, FLAME SPREAD 20
COLD APPLIED WATERPROOFING MEMBRANE FOR USE WITH SEPARATE WEARING COURSE	ASTM C 836	PASS 3.5 LBS.
HYDROSTATIC PRESSURE	ASTM C 1306	PASS 60 PSI
RESISTANCE TO PUNCTURE	ASTM D 154	PASS

* PRIMED WITH UNDERCOVER. TESTS BASED ON 60 MIL MEMBRANE UNLESS OTHERWISE NOTED.





CAN BE TOP-COATED ANY
COLOR

NO VOC'S NON-TOXIC

NON-FLAMMABLE WATER-BASED

LOW TEMPERATURE FLEXIBILITY UV

STABLE

WILL NOT CRACK OR PEEL

WITHSTANDS PONDING WATER

SELF-LEVELLING

EXCELLENT ADHESIVE

WetSuit® 1-Part Self-Levelling Cold Applied Membrane

WetSuit® 1-Part is a water-based, medium viscosity, self-levelling membrane that can be sprayed, brushed, or roll applied up to 80 mils wet vertically. WetSuit® 1-Part is used in roofing, waterproofing and air/vapor barrier applications.

For roofing, WetSuit® 1-Part is ideal for standing seam metal, aged SPF, wood and concrete. Our reinforcement fabric, Invisilink®, is frequently embedded into WetSuit® 1-Part during the preparatory phase by application to existing seams and joints, or to create a fully reinforced membrane.

Energy Star® Cool Roofs

The WetSuit® System can be top coated with a range of reflective coatings to meet Energy Star® and CRRC standards for “cool roof” reflectivity. For a list of approved topcoat manufacturers contact Neptune Coatings.

Technical Data

Viscosity: 95 to 100 KU

Solids Content: 65% by weight

Coverage: 18 sq. ft. per gallon yields 60 dry mils

Application Temperature: 40°F and rising, do not allow to freeze

Flammability: Class A fire rated ASTM 108 Flame Spread and Exposure

Color: Black

Cure Time: 2 hours @ 75°F and 60% humidity

Accelerated Cure Time: Instant skin

Packaging: 5 and 55 gallon containers

Shelf Life: 1 year @ 50°F to 105°F

Clean Up: Liquid state: Use detergent and water, Solid state: Use a citrus based cleaner or mineral spirits





WetSuit® UnderCover Self-Levelling Cold Applied Membrane for Detailing

UnderCover is a water-based, medium viscosity, self-levelling membrane that can be sprayed, brushed, or roll applied up to 80 mils wet vertically. UnderCover is used exclusively under, or between, the WetSuit® products.

UnderCover exhibits a tenacious adhesion to most substrates and is meant to be used in conjunction with Invisilink® fabric to detail penetrations, pre-strip in joints, edging, or cant strips, or self-level areas.

USED UNDERNEATH THE
OTHER WETSUIT®
PRODUCTS ONLY

USE WITH INVISILINK®
FABRIC TO DETAIL
PENETRATIONS AND
JOINTS

NO VOC'S

NON-TOXIC

NON-FLAMMABLE WATER-
BASED

LOW TEMPERATURE

FLEXIBILITY UV STABLE

80 MIL VERTICAL SPRAY
APPLICATION WITHOUT SAG

WILL NOT CRACK OR PEEL
SELF-LEVELLING

EXCELLENT ADHESIVE

Technical Data

Viscosity: 95 to 100 KU

Solids Content: 65% by weight

Coverage: 18 sq. ft. per gallon yields 60 dry mils

Application Temperature: 34°F to 100°F, do not allow to freeze

Color: Black

Elongation: 1550%

Cure Time: 2 hours @ 75°F and 60% humidity

Accelerated Cure Time: Instant skin

Packaging: 5 and 55 gallon containers

Shelf Life: 1 year @ 50°F to 105°F

Clean Up: Liquid state: Use detergent and water, Solid state: Use a citrus based cleaner or mineral spirits





NO VOC'S NON-TOXIC
NON-FLAMMABLE WATER-BASED
LOW TEMPERATURE FLEXIBILITY
UV STABLE
WILL NOT CRACK OR PEEL
WITHSTANDS PONDING WATER
EXCELLENT ADHESIVE

WetSuit® Trowel Roofing and Waterproofing Patch

WetSuit® Trowel is a high viscosity, water-based coating specifically designed as a roofing and waterproofing patch. Applied by trowel or brush, it is ideal for sealing leaky roof penetrations, ducting, flashings, cracks, joints and tears. WetSuit® Trowel is ideal on EPdM, TPO, asphalt, wood, metal, concrete and foam. Additionally, WetSuit® Trowel can be used as a waterproofing adhesive for setting tile and stone.

WetSuit® Fiber Trowel

WetSuit® Trowel has been reinforced with fiberglass strands which cures into a high tensile strength, minimum elongation roofing and waterproofing patch. Trowel, brush, or hand applied, it works perfectly for detailing high movement areas such as penetrations and joints.

Technical Data

Viscosity: 140 KU+

Solids Content: 68% by weight

Coverage: 10 sq. ft. per gallon yields 125 dry mils

Application Temperature: 40°F and rising, do not allow to freeze

Flammability: Class A fire rated, ASTM 108 Flame Spread and Exposure

Color: Black

Elongation: 1550%

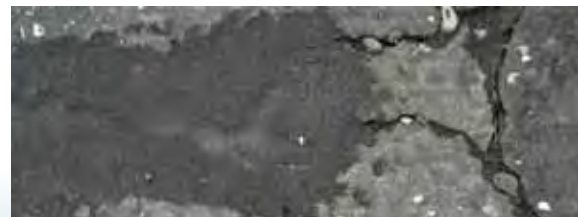
Cure Time: 2 hours @ 75°F and 60% humidity

Accelerated Cure Time: Instant skin

Packaging: 1 and 5 gallon plastic containers

Shelf Life: 1 year @ 50°F to 105°F

Clean Up: Liquid state: Use detergent and water, Solid state: Use a citrus based cleaner or mineral spirits





LIGHTWEIGHT & DURABLE

HIGH TENSILE AND TEAR STRENGTH

NON-RAVELING

MOISTURE, ROT AND MILDEW RESISTANT

GREAT ELONGATION AND RECOVERY PROPERTIES

Invisilink® Seam Fabric

Invisilink® is a lightweight, yet super durable, tear resistant seam fabric. Invisilink® features stitch bonded polyester which is one of the strongest materials available to the roofing industry for use as reinforcement in cold process roofing. Invisilink®'s characteristics provide an unusual combination of high strength properties with good elongation for excellent thermal stress force accommodations. The soft polyesters will readily conform to various roof surfaces such as embedded gravel and standing seam metal roof decks. It is also much easier to handle and apply properly than other soft polyester sheets. Invisilink® is used with WetSuit® 1-Part, WetSuit® Trowel or WetSuit® Undercover on new construction with seams, and gaps more than 1/4" wide. It can be applied by brush, roller or Neptune Coatings Seam Machine for large square footage applications.

Physical Properties	ASTM Test	Result	Available Sizes
WEIGHT		3 oz / sqyd	4" X 300'
COLOR		WHITE	6" X 300'
TENSILE	ASTM D1682	57.1 lbs	40" X 324'
ELONGATION	ASTM D1682	61.65%	*Note: Invisilink is not required for all WetSuit® applications. Please consult with Neptune Coatings.
MULLEN BURST	ASTM D3786	176.8 lbs	
TRAPEZOID	ASTM D1117	16.1 lbs	





WetSUIT Prime Mate Water Based Primer 17-PMW

Neptune Prime Mate a high tack acrylic water based primer for use as an adhesion promoter for the WetSUIT System.

Basic Uses

Provides excellent adhesion to all roofing membranes, metal, dry concrete and dry masonry.

Technical Data

Dry Time (tack free): 20-60 minutes
Specific Gravity: 1.03
Flash Point: n/a
Shelf Life: 6 months
Solids by Weight: 59%

Surface Preparation

All surfaces must be cleaned by brooming, vacuuming or high pressure clean dry air so that all dirt, dust, loose concrete, or other contaminants that may adversely affect the adhesion of the membrane are removed. Thinning the primer is not recommended.

Application

Prime Mate can be applied with medium nap roller or brush. Primed surface shall be free of runs, puddles, or excessive primer as this could call blistering. Brush or roll out all primer puddles or drips immediately. Prime only as much area as can be covered in half a day's work. Re-prime areas not covered in a half day's work with a light coat of Prime Mate.

Tack free is approximately 20 to 60 minutes. The opened containers, when not in use, should have the lids replaced so as to lessen the evaporation.

Coverage

Apply at 175 to 225 square feet per gallon, depending upon porosity of the substrate. Thinning is not recommended.

Technical Services

Technical advice, for use of material in specific applications and end use requirements, is available from the manufacturer. Material Safety Data Sheet (MSDS) should be consulted for further information. This product is for industrial and professional use only.

Packaging

5 gallon pails (18.9 liters) - 46 pounds

Limitations

Apply at temperatures over 40°F (10°C)

Recommended Storage

Protect from freezing. Recommended storage temperature is 60°F to 80°F (15°C to 25°C)

Warranty

This product is manufactured of good materials and by competent workmen. Sellers and manufacturers only obligations shall be to replace such quantity of product proved to be defective. Neither seller nor manufacturer shall be liable for injury, loss or damage, direct or consequential, arising from the use or the inability to use the product. Before using, user shall determine the suitability of the product for his/her intended use; and user assumes all risk and liability.



WetSUIT Prime Mate Solvent Based Primer 17-PMS

Neptune Prime Mate butyl primer is a high tack SBS rubber based primer for use as an adhesion promoter for the WetSUIT System.

Basic Uses

Provides excellent adhesion to all roofing membranes, metal, dry concrete and dry masonry.

Technical Data

Dry Time (tack free): 20-45 minutes

Specific Gravity: 0.804

Flash Point (open cup): 24 degrees F

Shelf Life: minimum 1 year

Solids by Weight: 37%

Surface Preparation

All surfaces must be cleaned by brooming, vacuuming or high pressure clean dry air so that all dirt, dust, loose concrete, or other contaminants that may adversely affect the adhesion of the membrane are removed. Thinning the primer is not recommended.

Application

Prime Mate can be applied with medium nap roller or brush. Primed surface shall be free of runs, puddles, or excessive primer as this could call blistering. Brush or roll out all primer puddles or drips immediately. Prime only as much area as can be covered in half a day's work. Re-prime areas not covered in a half day's work with a light coat of Prime Mate.

Tack free is approximately 20 to 45 minutes. The opened containers, when not in use, should have the lids replaced so as to lessen the evaporation of the solvents. Note: Some bubbling in the primer may occur on the surface as it cures. This has no effect on the performance of the product.

Please wear gloves and safety glasses when handling Prime Mate and be sure work area is well ventilated. Carefully clean up with mineral spirits, xylene, toluene or acetone.

Coverage

Apply at 125 to 175 square feet per gallon, depending upon porosity of the substrate.

Technical Services

Technical advice, for use of material in specific applications and end use requirements, is available from the manufacturer. Material Safety Data Sheet (MSDS) should be consulted for further information. This product is for industrial and professional use only.

Packaging

5 gallon pails (18.9 liters) - 46 pounds

Warranty

This product is manufactured of good materials and by competent workmen. Sellers and manufacturers only obligations shall be to replace such quantity of product proved to be defective. Neither seller nor manufacturer shall be liable for injury, loss or damage, direct or consequential arising from the use or the inability to use the product. Before using, user shall determine the suitability of the product for his/her intended use; and user assumes all risk and liability.



Reflex is manufactured using modified acrylic elastomer resins of the highest quality without the addition of plasticizers. Production is rigidly controlled to assure uniformity of quality in every batch of materials. Reflex is a water based, high solid elastomeric coating that utilizes the latest advances in acrylic technology. Premium quality acrylic resins are combined with reinforcing laminar pigments, an effective biocide package and non-migrating fire retardants, resulting in superior durability, weatherproofing, ultraviolet resistance, algae/mildew resistance and fire retardancy. Reflex white is highly reflective, permanently flexible "breathing" membrane, allowing moisture vapor from the substrate or building interior to escape while remaining impervious to mass water penetration from the exterior

Basic Uses

Reflex was especially developed for extending the life of metal, built-up, modified bitumen, concrete, hypalon, EPDM, single-ply, SPF or composite shingle roofs. Reflex forms a waterproof elastomeric seal, uniformly covering the textured profile of various substrates to form a monolithic membrane, providing protection from normal weathering, aging and ultraviolet exposure.

Energy Efficient

Reflex is certified to meet Energy Star, Cool Roof Rating Council (CRRC) and LEED reflectance and emissivity criteria.

Warranty

Reflex warranties are available for five, ten, fifteen and twenty year periods and are renewable for the life of the building. Refer to individual warranty documents for additional information.*

Typical Properties

1. Solids by Weight	71.97% (+2) ASTM D1644
2. Solids by Volume	59.25% (+2) ASTM D2697
3. Weight per Gallon	12.2 lbs ASTM D1475
4. Solar Reflectance	86% ASTM E-903
5. Thermal Emittance	90 ASTM C1371
6. Tensile Strength	301 psi ASTM D2370
7. Initial Elongation	331% ASTM D2370
8. Permeance	5.1 Perms ASTM D1653
9. Water Swelling	8.3% ASTM D471
10. Weather Resistance	No cracking or checking ASTM D4798
11. Adhesion	9.6 pli-wet ASTM D903
12. Tear Resistance	73 lbf/in ASTM D624
13. Fungi Resistance	Zero Rating ASTM G21
14. Low Temperature Flexibility	1000 hours Pass 1/2" mandrel bend @ -15°F ASTM 522
15. Code Approvals	Class A ASTM D6083-97a Also meets UL 790, ASTM E108 NFPA 256

Limitations

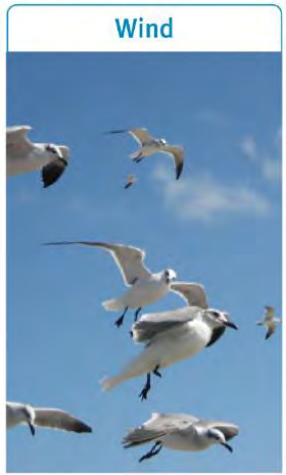
Do not proceed with application of coating materials when surface temperature is less than 50°F. No coating shall be applied if weather will not permit it to dry prior to exposure to precipitation or freezing. Dry time should be 24 to 48 hours when coating is applied in the morning and the temperature is 60°F and rising. Dry time could be longer depending on temperature and humidity.





Extending your roof life

Think of your existing older roof custom fit with a seamless, fully adhered monolithic sheet of rubber over it. This is the WetSuit® Recover System. WetSuit augments the existing roof's original strengths, while eliminating its weaknesses. WetSuit immediately improves wind uplift, fire protection, and water resistance. It provides high puncture resistance and severe hail performance while creating a non-slip, energy efficient surface. Best of all, it is water based, has no volatile organic content (VOC), and is sustainable. Now that is going GREEN! The WetSuit spray applied, instant set, recover system is a truly unique premium grade product, ideal for virtually all commercial and industrial roof applications. The highly reflective, self-washing and sustainable white surface coat delivers building owners significant energy savings year after year. With the highest wind uplift on the market, FM Class I-990, as well as a Class A fire rating and severe hail resistance, the WetSuit System is in a class all its own.



Roof Restoration System

What can The WetSuit Roofing System do for...

TPO/PVC and Hypalon

The WetSuit System installed over single-ply systems will substantially increase puncture and hail resistance as well as improve fire performance. The WetSuit system also transforms the dangerous slippery membrane surface into the most slip resistant walking surface in the industry.

EPDM

Old "fish mouthed" seams and excessive shrinkage can be quickly remedied by the WetSuit System while improving HVAC consumption up to 50% with the white surface coat. Improved fire resistance.

MODIFIED BITUMEN

Common system flaws such as cracks, buckling, alligating, and penetration flashing failure become irrelevant under the WetSuit monolithic membrane. Wind uplift and fire resistance are improved as is solar reflectance and the damage caused by thermal cycling.

SPF

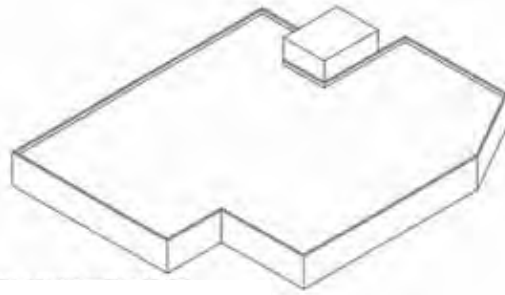
Used as a base coat over the SPF and below the white topcoat, WetSuit provides superior puncture and ponding water resistance, UV stable membrane that will protect the foam under the worst of circumstances far after the white topcoat has weathered away.

METAL

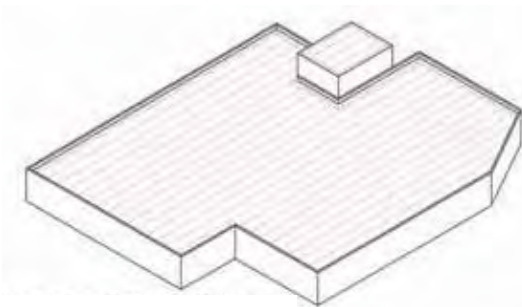
The WetSuit System can arrest and prevent rust while increasing energy efficiency. Questionable seams and fasteners are buried under the monolithic membrane. Ice damming is eliminated.



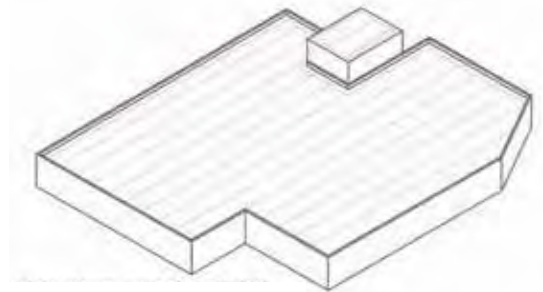
Roof Restoration System Seam Comparisons



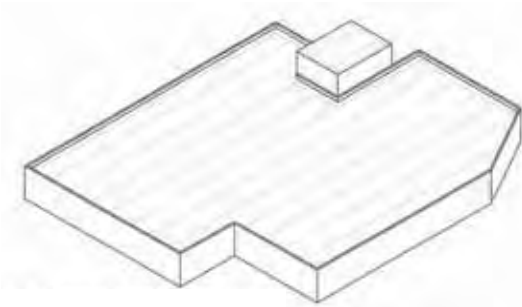
Wetsuit® Roofing System = No laps
Monolithic Membrane
Linear feet of field seams - 0



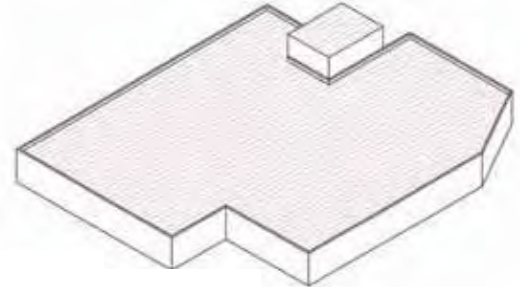
6' Wide membrane systems (PVC, TPO, EPDM)
Linear feet of field seams - 8,809



10' Wide membrane systems (PVC, TPO, EPDM)
Linear feet of field seams - 5,578



12' Wide membrane seams (PVC, TPO, EPDM)
Linear feet of field seams - 4,462



Modified Cap Sheet
3' Wide sheet systems
Linear feet of field seams - 15,650



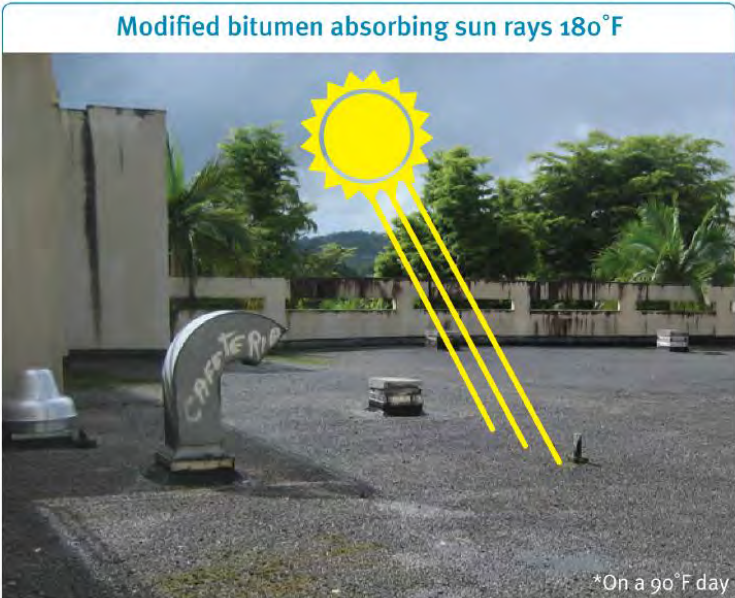


Roof Restoration System

Reflecting sustainable energy costs

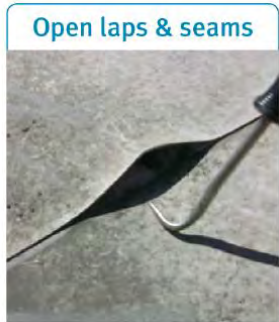
Powerful UV rays and radiant heat cause thermal cycling and rapid deterioration of all roofing membranes. Premature cracks, splits, rigidity, and fatigue are industry standards. Arresting heat gain from the sun with reflective coatings that cool the roof's surface seems common sense, but is still not common practice. The Wetsuit System's highly reflective EnergyStar surface coat can drop surface temperature as much as 50%, leading to reduced HVAC consumption, happier occupants, and returns on your investment. Best of all, once installed, the WetSuit System is sustainable. As the reflective surface wears over time, it can simply be recoated at pennies on the dollar, decade after decade!

- Reduces energy consumption
- Dramatically cools roofs
- Greatly drops heat transfer to building
- Calculated returns on investment



Roof Restoration System

The UV stable and seamless Wetsuit System eliminates many common failure points seen in conventional systems such as:



Tax and maintenance

The Wetsuit Roof Restoration System is uniquely ideal for your maintenance solutions in that it can be implemented slowly to fit your budget while immediately restoring your roof to a watertight condition. From simple patch and seam repair to a full custom fit recover roof, maintenance systems are fully tax deductible as an operating expense by the IRS. Unlike new roof systems that must be amortized over decades as a capital expense, the Wetsuit System is often expensed in the accounting period it was incurred.

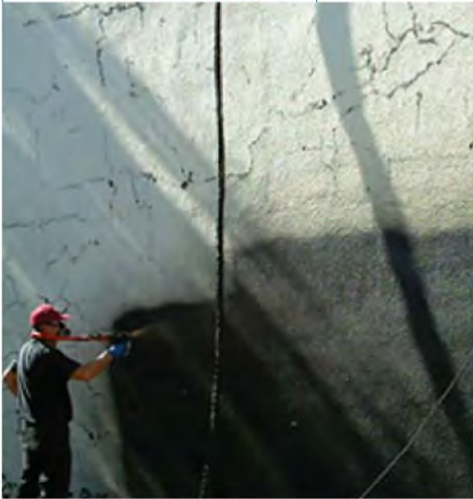


Roof Restoration System

Single System Building Envelope Solutions

Not just limited to roofing, the versatile Wetsuit System can be used throughout the building as well. Below grade waterproofing, air/vapor barriers, wall restoration, fountains and many specialty applications allow owners and contractors a complete building envelope solution through one system and a single warranty.

Air / Vapor Barrier



Garden Roofing



Below Grade Waterproofing



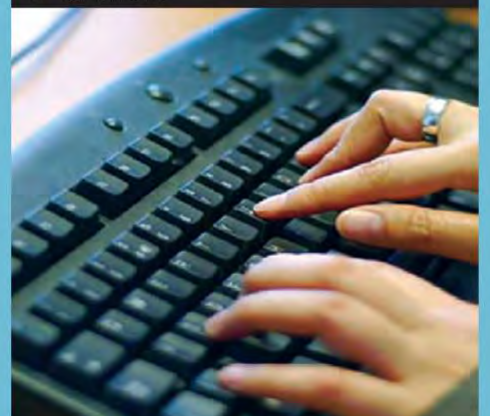
4 WETSUIT MEMBRANE



5 REFLECTIVE COAT



6 MANAGE





Garden Roof System

Waterproofing

We put the roof in waterproof. The WetSuit® membrane has been used in fountains, planters, ponds and other applications where contact with water is expected. As well as WetSuit's in submerged and wet conditions, it also has many unique features making it the best choice for a garden roof applications:

A Green Membrane for a Green Roof

- No VOC, all water based
- Cold spray applied eliminates the dangers of hot applied systems
- Totally monolithic, no seams to fail
- Fully adhered to substrate, restricts lateral movement of water if damaged
- No generated waste, custom fit
- Only installed by trained and certified applicators

Garden Roof Advantages

ECOLOGICAL

- Resolves urban island effect
- Natural habitat created for animals
- Decrease smog
- Decrease carbon footprint

OWNER INCENTIVES

- Longer roof life expectancy
- Energy efficiency
- Increase usable space
- Contribute LEED points
- Create a relaxing environment

TECHNICAL BENEFITS

- Storm water retention
- Lower noise levels
- Added insulation

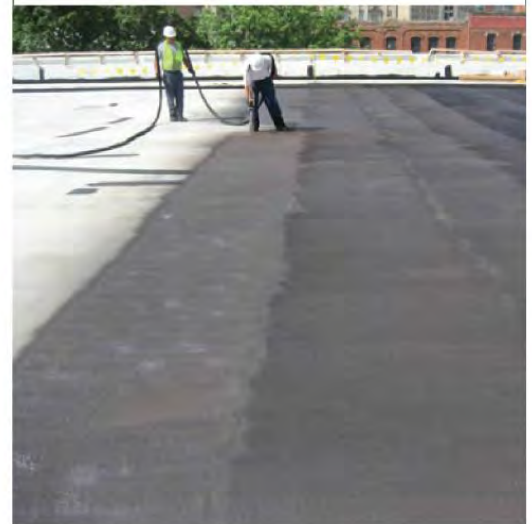
Ponding Water



Fully Adhered / High Elongation



Monolithic



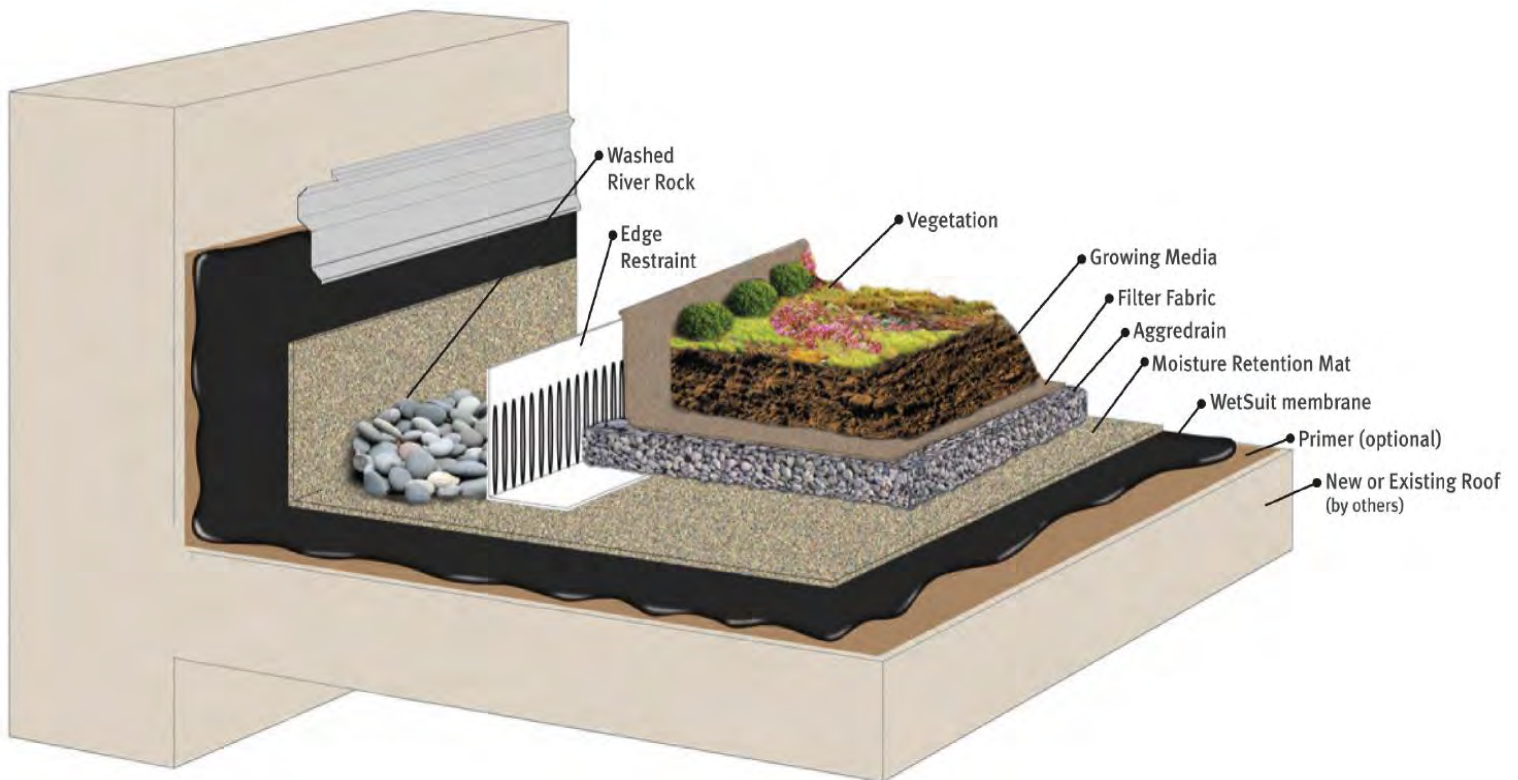
Garden Roof System

Design

Because garden roof design is virtually limitless, each project will be unique and designed to meet specific objectives. The WetSuit membrane can be installed to any mil thickness in one coat, either horizontally or vertically, allowing freedom of design for the roof deck. Neptune Coating's experienced staff and GRPs work closely with your team, from early design to detail and specification development, to make sure these specific objectives are met.

Rapid Retrofits

WetSuit is an ideal system for green roof retrofits, where existing roofs can simply be cleaned and rapidly sealed with the WetSuit membrane. Often existing roofs are on the verge of being too old to place a garden roof over. The lightweight WetSuit membrane can build upon the base of the existing roof, creating a multilayer, monolithic system, without the need for costly tear offs, while delivering up to 20 year warranties.



Waterproofing System

Vertical Waterproofing

Instant Set

WetSuit's two component mixture gives a rapid set within 3 seconds, allowing any mil thickness to be sprayed vertically without any running or sagging.

Cold Applied

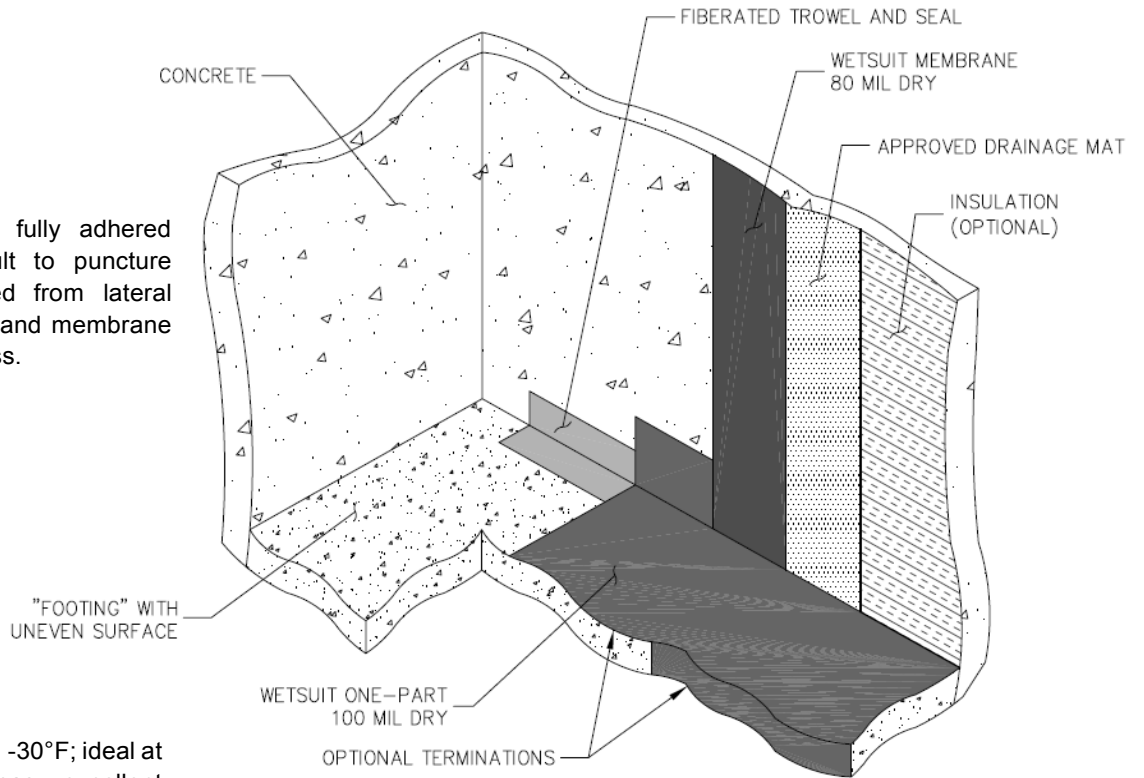
Membrane is cold spray applied; eliminating torches and kettle hazards, while allowing easy vertical installs

Environmentally Friendly

All water based means no VOC restrictions

Monolithic Membrane

The tough, seamless and fully adhered coating results in a difficult to puncture surface. Water is restricted from lateral migration between the wall and membrane during the back filling process.



Cold Resistance

Wetsuit remains flexible down to -30°F; ideal at the freeze/thaw line. Also has excellent elongation and recovery



Waterproofing System

Horizontal Waterproofing

Dead Level Applications

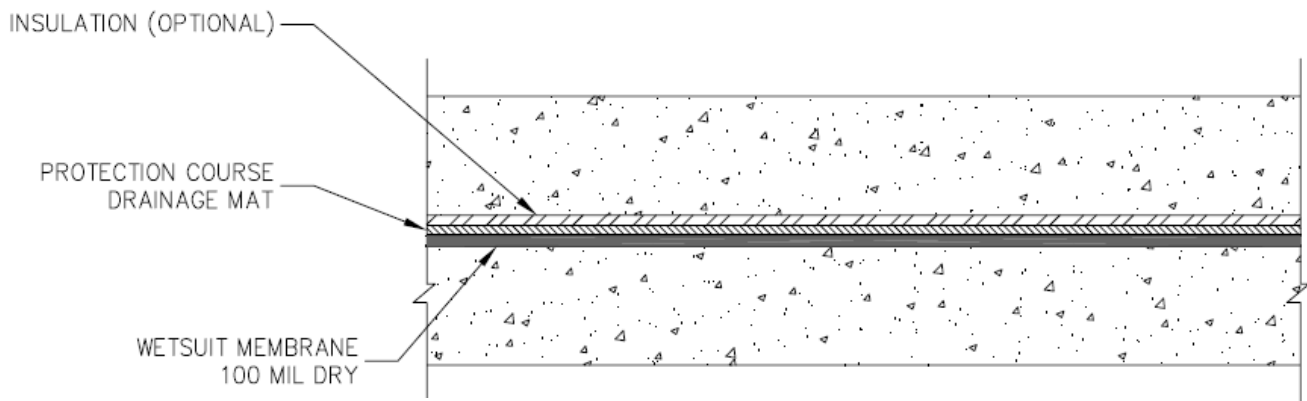
The Wetsuit membrane has been used in fountains, planters and ponds. It has performed well in submerged and wet conditions where contact with water is constant. This type of application is fully warrantable.

Rapid Application

With a cold spray applied production of 1500 sq feet per hour with a crew of three and a 250 ft hose mounted cart for easy access to difficult areas. The Wetsuit membrane is quick and easy to install.

Any Thickness in One Coat

Wetsuit can be installed at a minimum of 100 dry mils (over 40% thicker than most other membranes); effectively bridging cracks and substrate irregularities. Additionally, the membrane flashes easily.



UV Stable

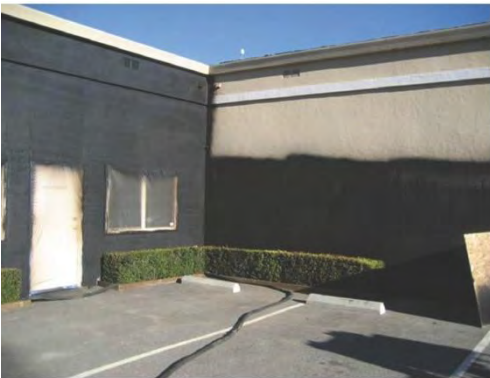
Unlike other fluid applied membranes, WetSuit can be exposed indefinitely without UV damage. Therefore, construction can proceed at its own pace.

New Construction or Restoration

Wetsuit is the ideal choice for both new and renovation projects. The membrane can cover and adhere to a variety of existing surfaces. It's the best choice for phased construction with little to zero slope and difficult detailing.

Physical Properties	FM Test	Result
FIRE	ASTM E108	CLASS A ON 4" SLOPE
HAIL RESISTANCE	FM 4470	SEVERE HAIL PASS
UV EXPOSURE	FM 4470	PASS
FIRE	FM 4470	PASS
WIND	FM 4470	CLASS 1-990 OVER STRUCTURAL CONCRETE, CLASS 1-420 OVER HOT
WATER LEAKAGE	FM 4470	PASS
FOOT TRAFFIC	FM 4470	PASS
PONDING		NO EFFECTS AFTER 6 MONTHS





Wetsuit Wall Restoration System



Neptune's wall restoration program, utilizing our WetSuit spray applied system, can quickly restore aged, cracked, and leaking stucco and concrete exterior walls. Whether refreshing curb appeal, increasing energy efficiency, or protecting property value, the versatile WetSuit System offers long term warrantable solutions for the entire building envelope.

WetSuit System Advantages

APPLICATION BENEFITS

- Stucco like finish
- Surface coated any color
- Spray applied
- No VOC, very low odor
- Rapid Installation

TECHNICAL BENEFITS

- 1586% elongation guarantees no cracks
- High puncture resistance
- Impermeable to air and water transmission
- Sustainable
- E96 .0382 WVT / .05 PERMS
- D2178 1.57 lbs / FT2 or .0018 CFM / FT2

We take pride in the quality of our products and strive to provide the best in customer service. Our high standards extend to every aspect of our business including our Wetsuit applicators. Hand selected companies qualify as Certified WetSuit Applicators only after a thorough background search and interview process proving their ability to provide good roofing practices, good business practices and personal professionalism



The contents and methods described herein are the intellectual property of Neptune Coatings. The information is based on data and knowledge considered to be true and correct at the time of publication and is offered for the user's consideration, investigation and verification. The information is subject to change without notice. The determination of suitability and fitness of the products and the application described herein for a particular purpose are the sole responsibility of the user. Please read all statements, recommendations and suggestions in conjunction with the conditions of sale which apply to all goods sold by Neptune Coatings for the United States and abroad, or Harco Group Internationally, including the express disclaimers by each company of the implied warranties of merchantability or fitness for a particular purpose.



We take pride in the quality of our products and strive to provide the best in customer service. Our high standards extend to every aspect of our business including our Wetsuit® Applicators. Hand selected companies qualify as certified Wetsuit Applicators only after a thorough background search and interview process proving their ability to provide good roofing practices, good business practices and personal professionalism.



Poseidon Sales, LLC

3471 High Ridge Rd

Boynton Beach, FL 33426

407-504-9951

PoseidonCoatings.com